

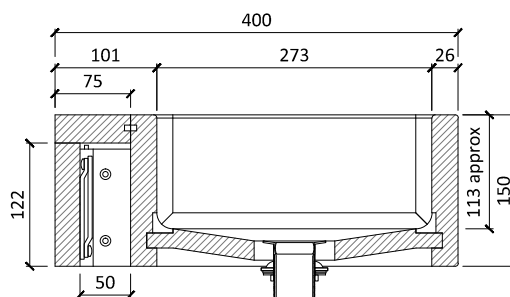
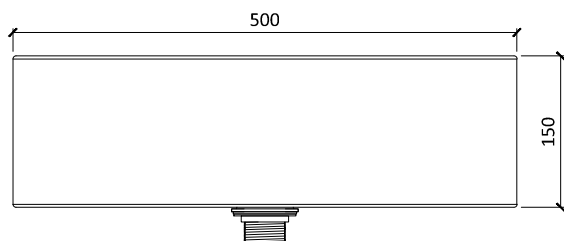


GEO BASIN DATA SHEET

The William Garvey 'Geo Basin' is constructed from teak and specialist marine plywood. It is fixed to the wall by means of metal cantilever brackets and a timber wall plate as illustrated. For a secure and level installation, the wall itself should be flat, vertical and have either a solid timber or masonry structure to take screw fixings. The bottom of the basin is slightly 'dished' to ensure even drainage. All WGL products can be bespoke made to meet your specific project requirements.



GEO BASIN	DIMENSIONS	
length	500mm	19.7"
width	400mm	15.7"
height	150mm	6"
internal length	448mm	17.6"
internal width	273mm	10.7"
internal depth	113mm	4.5"
wall thickness	26mm	1"
weight	8.5kg	18.7 lbs
boxed weight	9.5kg	20.9lbs
boxed size	600x500x280mm	24x20x11"



DESIGN CONSIDERATIONS

PLUMBING CONNECTIONS

- Geo Basins are fitted with standard 1 1/4" chrome captive waste (chainless) compatible with standard basin traps.
- The waste is fitted in the centre of the basin.
- Generally, taps are wall mounted but there is sufficient depth at the back of the basin for some conventional tap styles
- Please Note - Overflows are not fitted as a standard item, but can be added as an additional option

BESPOKE SIZES AVAILABLE

- Geo basins can be made to individual sizes..... Please contact us to discuss your specific requirements

CARE & MAINTENANCE

- All William Garvey teak work is finished with a specially formulated marine polish. It has exceptional adhesion to the timber, forming a tough layer which will not absorb stains and is easy to clean using ordinary non-abrasive bathroom and kitchen cleaners.
- Products containing bleach should be avoided as they will have a detrimental effect to the marine polish finish. Limescale removers can be used without the risk of damage.